

Long March 6 (Chang Zheng 6-CZ-6)

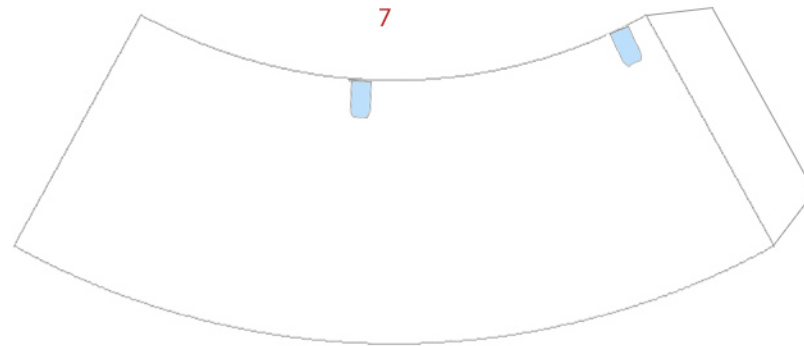
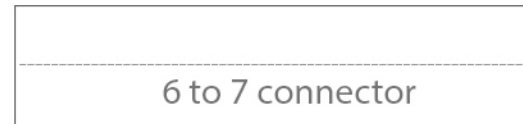
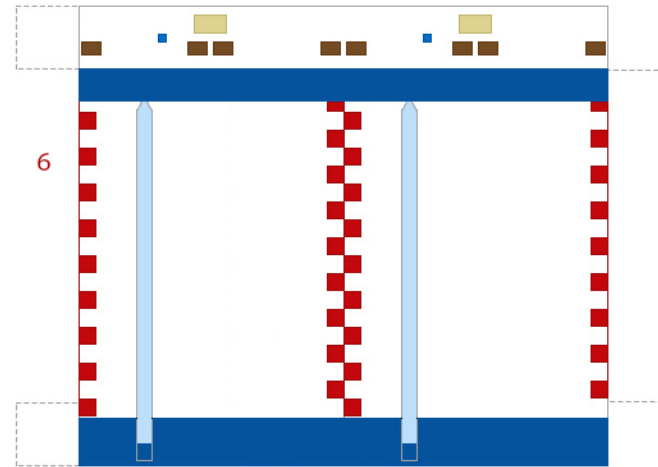
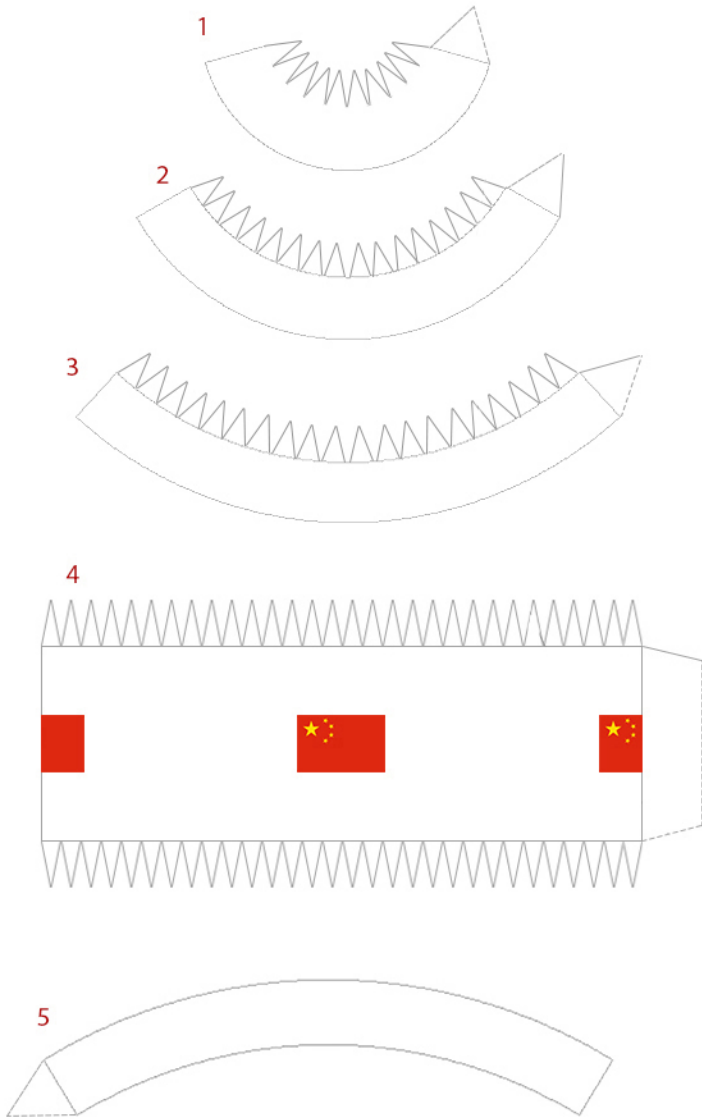


The Long March 6 or Chang Zheng 6 as in pinyin, abbreviated LM-6 for export or CZ-6 within China, is a Chinese three-stage, liquid-fuelled carrier rocket of the Long March family, which was developed by the China Aerospace Science and Technology Corporation and the Shanghai Academy of Spaceflight Technology.

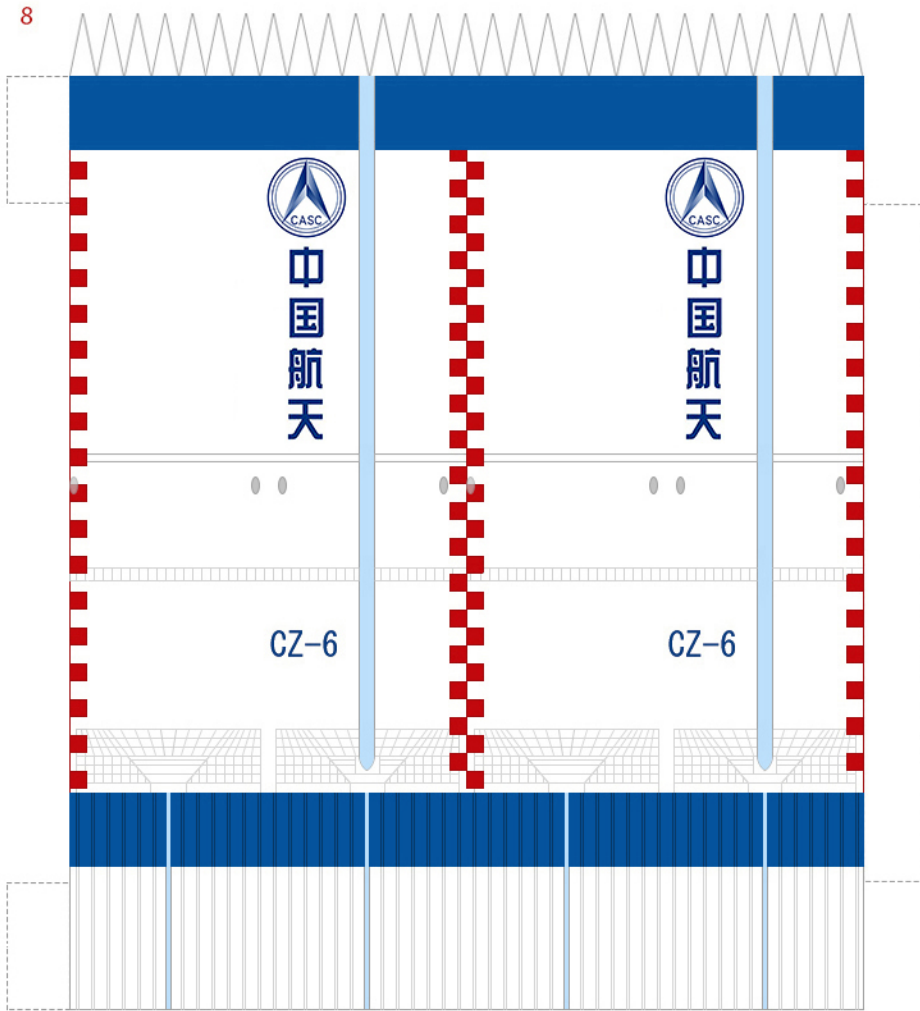
The rocket was developed in the 2000s, and made its maiden flight in 2015. As one of the new generation of non-toxic and non-polluting small liquid launch vehicle, the 95 foot tall Long March 6 was designed to be a light capacity, "high-speed response" rocket, complementing the heavy lift Long March 5 and the mid-heavy lift Long March 7 rocket families. It is capable of placing at least 1,000 kilograms (2,200 lb) of payload into a sun-synchronous orbit.

On September 20, 2015, Long March 6 made its first successful flight at the Taiyuan Satellite Launch Center, marking not only the addition of new members to the family of Long March launch vehicles, but also the creation of a new record for multi-satellite launches with one rocket in China's space industry. This is also the first launch of China's new generation launch vehicle.

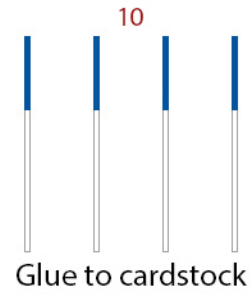
Long March 6 (Chang Zheng 6-CZ-6)



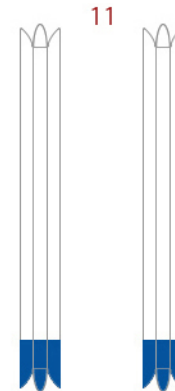
Long March 6 (Chang Zheng 6-CZ-6)



Glue to two layers of cardstock



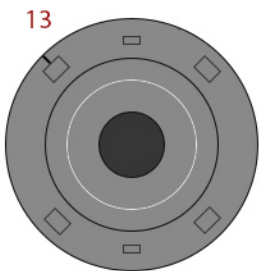
Glue to cardstock



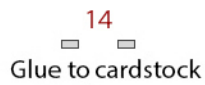
11



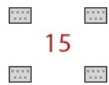
Glue to two layers of cardstock



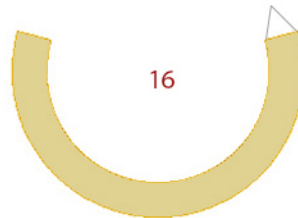
13



Glue to cardstock



15



16



17

roll to a ring with color inside



18

Color back Black

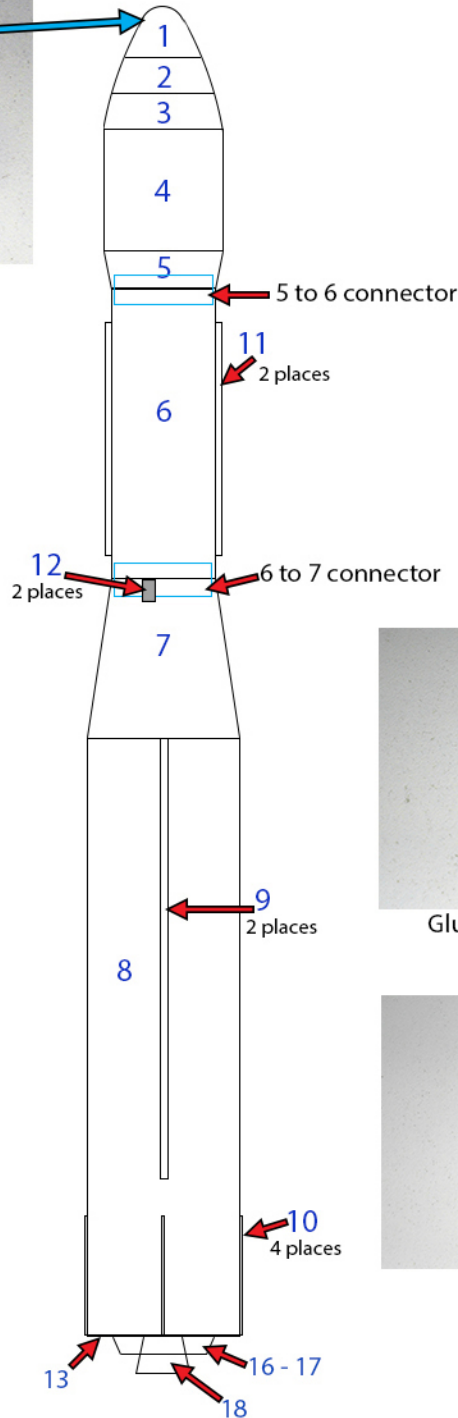
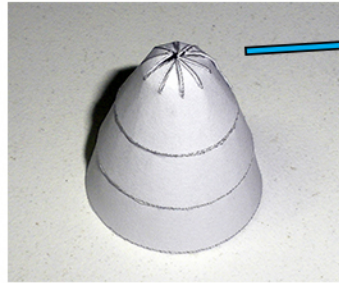
Long March 6 (Chang Zheng 6-CZ-6) 1/100 scale

Instructions



Keep all seems aligned during assembly.

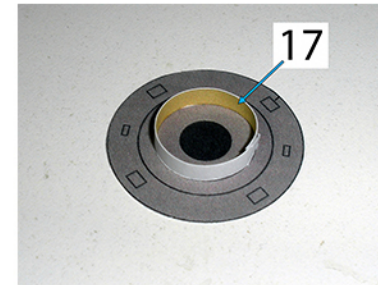
- Glue 11 on the blue lines on 6
- Glue 12 on the blue areas on 7
- Glue 9 on the blue lines on 8
- Glue 10 on the blue lines at the bottom of 8



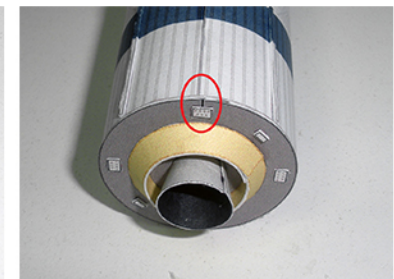
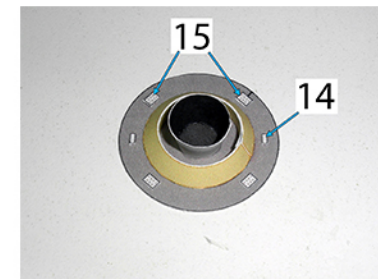
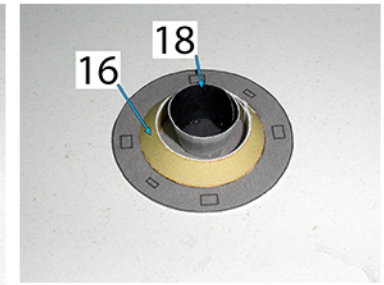
Completed Model



Engine area instructions



Glue on the white circle



Glue to the bottom, match the black marker to the seem as shown for proper graphic placement.